



Review of Bearna Local Area Plan Issues Paper 2017

(Submission period: 10/07/2017 to 08/08/2017)



What is a Local Area Plan?

A Local Area Plan (LAP) is a land-use plan which sets out the development strategy for an area within the lifetime of the plan. The plan contains an overall vision for the area and includes specific land use objectives to guide future development to achieve this vision.

The new LAP will establish a framework for the planned, co-ordinated and sustainable development of the area with the aim to enhance and facilitate the balancing of economic, social and environmental needs/demands, in order to maintain and develop a high quality of life, without compromising the protection of the environment and the needs of future generations.

Why Replace the Current Bearna LAP?

There is a legal requirement in planning legislation to make, amend or revoke an existing plan, at least every six years. The Bearna LAP 2007-2013 was extended until December 2017 under Section 19 of the Planning and Development Act 2000 (as amended). Therefore a new plan is now required to replace the existing LAP.

The new Bearna LAP will be incorporated into the Galway County Development Plan, 2012-2021, by way of a variation to the existing county development plan. This will ensure the new LAP is fully consistent with the County Development Plan, which is the overarching land-use plan for all LAPs in County Galway.



What Issues Will be Considered in the New LAP?

Variation 1

The boundary of the existing Bearna LAP will require re-examination in order to take account of Variation 1 (Galway Transport Strategy) of the Galway County Development Plan 2015-2021, as well as the current and future needs of Bearna over the plan period.

Zoning

As part of the new plan, a new zoning map will be prepared to take account of current and future population needs of Bearna, subject to environmental and other planning considerations.

Core Strategy

The current LAP provides for a population allocation of 420 persons for Bearna over the plan period, which equates to approximately 155 new houses. This population allocation aligns with the Settlement and Core Strategies for County Galway, as set out in the Galway County Development Plan, 2015-2021, and will remain unchanged in the new plan.

Community Facilities & Amenities

A new approach is needed to facilitate the delivery of new community facilities and amenities for the current and future residents in Bearna over the plan period, such as new educational facilities, new recreational facilities and new coastal facilities, and this will be considered in the new plan.

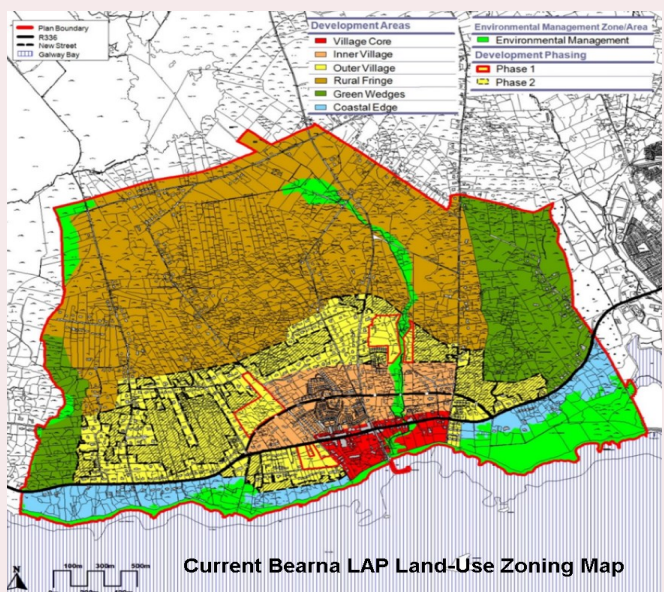


Purpose of the Issues Paper?

The purpose of this Issues Paper is intended to get you thinking about the type of land-use issues that might be addressed in the new Bearna Local Area Plan, and to encourage you to make a submission on these issues, or any other planning issues that you think are important. It also provides an important opportunity for the residents of Bearna village and its environs to get involved in the plan preparation process.

Submissions

Your submissions on the Issues Paper will assist Galway County Council in identifying the local issues that will inform the preparation of the proposed draft Bearna LAP 2017, the first stage in the plan making process. If you are interested in making a submission at the pre-draft stage, you are invited to make your submissions to the Forward Planning Section of Galway County Council from Monday 10th of July 2017 until Tuesday 8th of August 2017 inclusive. Galway County Council will also be holding a Public Information Day at The Twelve Hotel, Bearna, on the 18th of July 2018 from 3.00pm to 7.30pm. All are welcome to attend.



Q. What is the biggest land-use issue in Bearna?

Q. What way would you like to see Bearna village develop in the future?

Current Strategic Vision for the Bearna

By 2020, Bearna will be an attractive, prosperous and a natural environment, a range of supporting services, facilities and amenities and a high quality of life for the local community. In particular, the vision for Bearna is to promote the creation of a settlement that:

- Has a sustainable level of development that is appropriate to the character, heritage, amenity and strategic role of Bearna and that allows for the enhancement of the village character, services, facilities and amenities.
- Supports and protects the environment, heritage, character and amenity of the village, including in particular its Gaeltacht status, fishing heritage, local village character and coastal amenity.
- Has a high quality built environment with a well-developed public realm and appropriate building forms, materials, heights and associated landscaping that complement the distinctive character, heritage and amenity of the village.
- Has a range of community facilities and amenities to serve the local community, including the educational, recreational, religious, social, civic and community needs of children, youths, adults and the elderly.
- Optimises its coastal location and amenity, particularly in relation to the provision of public access to the seashore, opportunities for water-related amenities and activities and an appropriate interface between land and sea.
- Is well connected to, but has a strong local identity separate from, nearby settlements, in particular Galway City to the east and Na Forbacha to the west.
- Has a vibrant and accessible village centre that is in walking/cycling distance from most places in the village, that has a strong focal point in the Bearna Pier and Harbour and that provides a range of community facilities and commercial services for the local community.
- Has a strong sense of community spirit, civic pride and social inclusiveness.
- Has an appropriate level of services and infrastructure to support existing and future development in a manner that protects and is complementary to the environment, heritage, character and amenities of the village, including: an adequate road network, traffic management and parking facilities; improved public transport with regular bus services; safe routes for pedestrians and cyclists; and adequate wastewater disposal, water supply and surface water drainage.



Q. Does this Vision still apply today?

Q. As a resident of Bearna, What is your vision?

Village Development

The Village Development Strategy (VDS) in the current LAP seeks to implement the Core Strategy and Settlement Strategy for County Galway, as set out in the Galway County Development Plan, 2015-2021, as it applies to Bearna. To achieve this strategy, the existing plan sought to ensure that the nature, density, scale and design of new development would be appropriate to the character and setting of the village, thereby contributing to the creation of a high quality living environment.

Q. What are your aspirations for the future development of Bearna village centre?

Q. Do you like the design and scale of development in village centre (i.e. streetscape)?

Q. Are there a sufficient level of services in the village?



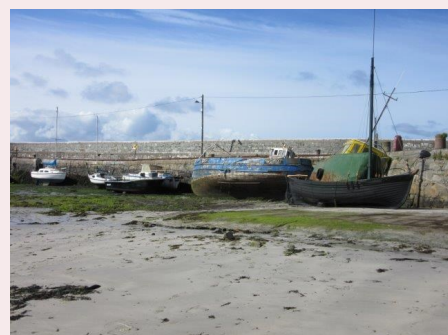
Cultural Heritage

The Cultural Heritage Strategy in the current LAP seeks to ensure that new development respects the historical and cultural heritage of Bearna and protects & enhances its Gaeltacht status and linguistic heritage, in accordance with the provisions of both the current Galway County Development Plan & the Gaeltacht Local Area Plan.

Q. Is Irish spoken daily in Bearna?

Q. How can we promote the linguistic and cultural heritage of the Irish language in Bearna village?

Q. Should all signage in Bearna be in Irish?



Community Facilities and Amenities

The Community Facilities & Amenities Strategy (CFAS) in the current LAP seeks to support the provision of an adequate level and distribution of community facilities and amenities in Bearnna that meet the current and future needs of the local community. The plan included the aspirational provision of a number of new community facilities and amenities for Bearnna, such as: a coastal amenity park with seaside promenade; a primary school; playing pitches; a community/youth centre; village squares & parks; jetty/marina facilities and the consideration of other water-related facilities along the foreshore.

Q. Does Bearnna village have an adequate level of community and amenity facilities?

Q. What types of community and amenity facilities are most important to you?

Q. Is there adequate provision of street furniture in the village? e.g. public seating, planters



Built and Natural Heritage

The built and natural heritage strategy in the current LAP seeks to protect and enhance the existing built and natural environment of Bearnna.

The **Built Environment** of the village and its rural environs consists of the existing architectural and archaeological heritage of Bearnna, including its Protected Structures, buildings of local interests, the Architectural Conservation Area, the Record of Monuments and Places, the unrecorded sub-surface artefacts and Zones of Architectural Potential.

Q. What is your favourite building or place in Bearnna and why?

Q. Do you know of any buildings/structures/areas that you would like to see protected as part of Bearnna's built heritage?

The **Natural Environment** of the village and its rural environs consist of a wide range of natural features and processes that contribute to the environmental quality. These include ecological biodiversity and nature conservation, environmental designations, ecological networks, ecosystems, the coastal zone, soil and geology, groundwater & aquifers, surface wa-

ter drainage, water resources & quality, flooding, landscape character, protected views, visual amenity, field patterns, hedgerows & stone walls.

Q. How do we promote awareness of Bearnna's natural heritage?

Q. Are there any specific views or areas of beauty in Bearnna that you consider should be protected?

Q. How do we utilise the existing waterways and coastal zone more effectively?

Roads and Transportation

The Roads and Transportation Strategy in the current LAP seeks to ensure the provision of a safe and convenient road and pedestrian movement network, which caters for the existing and future sustainable expansion of Bearnna village and its environs, within the lifetime of the plan. The strategy promotes the provision of safe and adequate access to the plan area lands, without significantly compromising the capacity of the existing local and regional road network, as well as any future road routes within the plan area.

Q. Is Bearnna village pedestrian friendly?

Q. Have you any specific suggestions to encourage the use of public transport, cycling and walking?

Q. Are there any existing walking and cycling routes/loops that should be highlighted in the new plan?



Infrastructure and Services Strategy

The Infrastructure and Services Strategy in the current LAP seeks to ensure adequate utility services and infrastructure to support existing and new development in the plan area in a manner that is efficient, cost effective, environmentally friendly and protects public health. Since the adoption of the 2007 Bearnna LAP, the responsibility for the provision of water services has been transferred from the local authority to Irish Water.

Q. Does Bearnna need its own wastewater treatment plant to meet current and future growth needs?

Q. Is the existing water supply adequate to meet current and future growth needs?

If you are interested in any of the issues in this booklet or have any other planning that you wish to have considered in the preparation of the Draft Bearna Local Area Plan 2017, you are Invited to have your say, before Tuesday 8th of August 2017 (5pm), in one of the following ways:

- A) WRITE to: Forward Planning, Planning Department, Galway County Council, County Hall, Prospect Hill, Galway City.**
- B) E-MAIL: forwardplanning@galwaycoco.ie**
- C) COME to the Public Information Day on the 18th of July 2017 at The Twelve Hotel, Bearna from 3.00pm to 7.30pm.**

Last Day for Submissions is the 8th of August 2017